

Title **PUMPENG 5kW 'Raptor'**
HIGH HEAD SUBMERSIBLE
DEWATERING PUMP

Rev. 1 Feb. '12

SUPPLIED BY:

INFORMATION ON THIS DOCUMENT IS SUBJECT TO CHANGE WITHOUT NOTICE

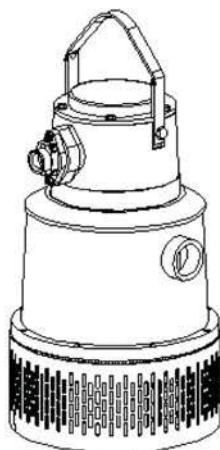


Unit 2/26 Ilda Rd.
Canning Vale. W.A. 6155
PO Box 1340
Canning Vale. W.A. 6970

Ph: 61 8 9256 3182
Fax: 61 8 9256 3867
Email: sales@pumpeng.com.au
Web: www.pumpeng.com.au

WITHOUT LIMITING THE RIGHTS UNDER
COPYRIGHT, NO PART OF THIS DOCUMENT
MAY BE REPRODUCED, STORED IN OR
INTRODUCED TO A RETRIEVAL SYSTEM,
OR TRANSMITTED IN ANY FORM OR BY
ANY MEANS, OR FOR ANY PURPOSE,
WITHOUT THE EXPRESS WRITTEN
PERMISSION OF PUMPENG.

ACCESSORIES		
PART No.	DESCRIPTION	CONSISTS OF:
05-RK	5kW Repair Kit	Item #23 - Circlip
		Item #29 - Bearing Lower
		Item #30 - Bearing Upper
		Item #42 - Mech. Seal
		- Upper & Lower
		Item #70 - Wear Protection
		+
		1x O-Ring Kit #05 OK



ACCESSORIES		
PART No.	DESCRIPTION	CONSISTS OF:
05-OK	5kW O-Ring Kit	-
		Item #21 - Nylon Washer
		Item #24 - O-Ring
		Item #25 - O-Ring
		Item #26 - O-Ring
		Item #27 - O-Ring
		Item #28 - O-Ring
		Item #46C - O-Ring

ENHANCED PERFORMANCE PARTS

ITEM No.	PART No.	DESCRIPTION	MATERIAL	QTY.	ITEM No.	PART No.	DESCRIPTION	MATERIAL	QTY.
1	05130001	5kW Impeller Key	S/Steel	1	50	05100050	Rotor Assembly - Complete	SS/Alum.	1
3	05120003	Bearing Cover Bolt	S/Steel	3	50A	05100050A	Replaceable Rotor Shaft	S/Steel	1
4	05120004	Junction Cover Bolt	S/Steel	5	51	05190051	5kW Bearing Cover	Aluminium	1
5	05120005	Cable Entry Bolt	S/Steel	2	52	05190052	Bearing Housing Lower	Aluminium	1
6	05120006	Outer Casing Bolt	S/Steel	8	53	05630053	5kW Outer Casing	S/Steel	1
7	05120007	Screw-Handle	S/Steel	2	54	05100054	5kW Strainer - Galvanised	Galv. Steel	1
8	05120008	Impeller Bolt	S/Steel	1	55	05120055	Spacer Nut	S/Steel	4
9	05130009	Oil Housing Inspection Screw	S/Steel	3	56	05120056	Diffuser Stud	S/Steel	4
10	05120010	Oil Housing Screw	S/Steel	4	57	05120057	5kW Impeller Shim 0.3mm	S/Steel	3
14	05120014	M10 Nut	S/Steel	8	57A	05120057A	5kW Impeller Shim 1.5mm	S/Steel	2
15	05120015	Suction Cover Half Nut	S/Steel	6	58	05291058	Diffuser	Alum/Poly	1
16	05120016	M8 Washer	S/Steel	7	59	05291059	Suction Cover - High Head	Alum/Poly	1
17	05120017	M10 Washer	S/Steel	20	61	05200061	5kW Stator 415v	-	1
18	05120018	M20 Washer	S/Steel	4	61A	05200061A	5kW Stator 1000v	-	1
19	05120019	Bearing Spacer	S/Steel	2	61B	05200061B	Protective Motor Cable Sheath	Composite	1
21	05120021	Nylon Washer	S/Steel	1	63	05100063	Impeller - High Head	Cr27	1
22	05120022	Combination Lock Washer	Nylon	3	70	05105070	Wear Protection	NBR/SS	2
23	05120023	Circlip	HTS	3	71	05190071	Junction Box Cover/Lid	Aluminium	1
24	05100024	O-Ring - Junction Box Lid	NBR	1	72	05190072	5kW Cable Entry 16-22mm	Aluminium	1
25	05100025	O-Ring - Bearing Housing/Stator Casing	NBR	2	77	08120027	Seal Sleeve Washer 14-16mm	S/Steel	2
26	05100026	O-Ring - Oil Housing	NBR	1	77A	08120027A	Seal Sleeve Washer 16-18mm	S/Steel	2
27	05100027	O-Ring - Upper Bearing	NBR	1	77B	08120027B	Seal Sleeve Washer 18-20mm	S/Steel	2
28	05100028	O-Ring - Inspection Screw	NBR	3	77C	08120027C	Seal Sleeve Washer 20-22mm	S/Steel	2
29	05100029	Bearing Lower	-	1	78	08102031	Seal Sleeve 14-16mm	Rubber	1
30	08100122	Bearing Upper	-	1	78A	08102031A	Seal Sleeve 16-18mm	Rubber	1
31	05120031	Suction Cover Stud	S/Steel	3	78B	08102031B	Seal Sleeve 18-20mm	Rubber	1
32	05120032	Earth Plate Screw	S/Steel	2	78C	08102031C	Seal Sleeve 20-22mm	Rubber	2
33	05100033	5kW Earth Plate	S/Steel	1	87	05120087	Spring Washer	S/Steel	8
34	05100034	Spacer Pipe Spring	Galv. Steel	4	90	05120090	Spacer Tube	S/Steel	4
42	05128042	Mechanical Seal - Upper & Lower	TC	2	91	08102063	Lead Through Complete	Rubber	1
42A	05128042A	Mechanical Seal Drive Pin	S/Steel	2	-	-	-	-	-
44	05120044	Impeller Nut	S/Steel	1	-	-	-	-	-
46	05190046	5kW Stator Casing	Aluminium	1	-	-	-	-	-
46A	05190046A	Junction Box	Aluminium	1	-	-	-	-	-
46B	05190046B	M10 Bolt - Junction Box/Stator Casing	S/Steel	5	-	-	-	-	-
46C	05190046C	O-Ring - Junction Box/Stator Casing	NBR	1	-	-	-	-	-
47	05190047	5kW Pump Carry Handle - Galvanised	Galv. Steel	1	139	GP2400139	Anode	Zinc	3
48	05191048	Oil Housing	Alum/Poly	1	-	-	-	-	-

Title **PUMPENG 5kW 'Raptor'
HIGH HEAD SUBMERSIBLE
DEWATERING PUMP**

Rev. 1 Feb. '12

SUPPLIED BY:

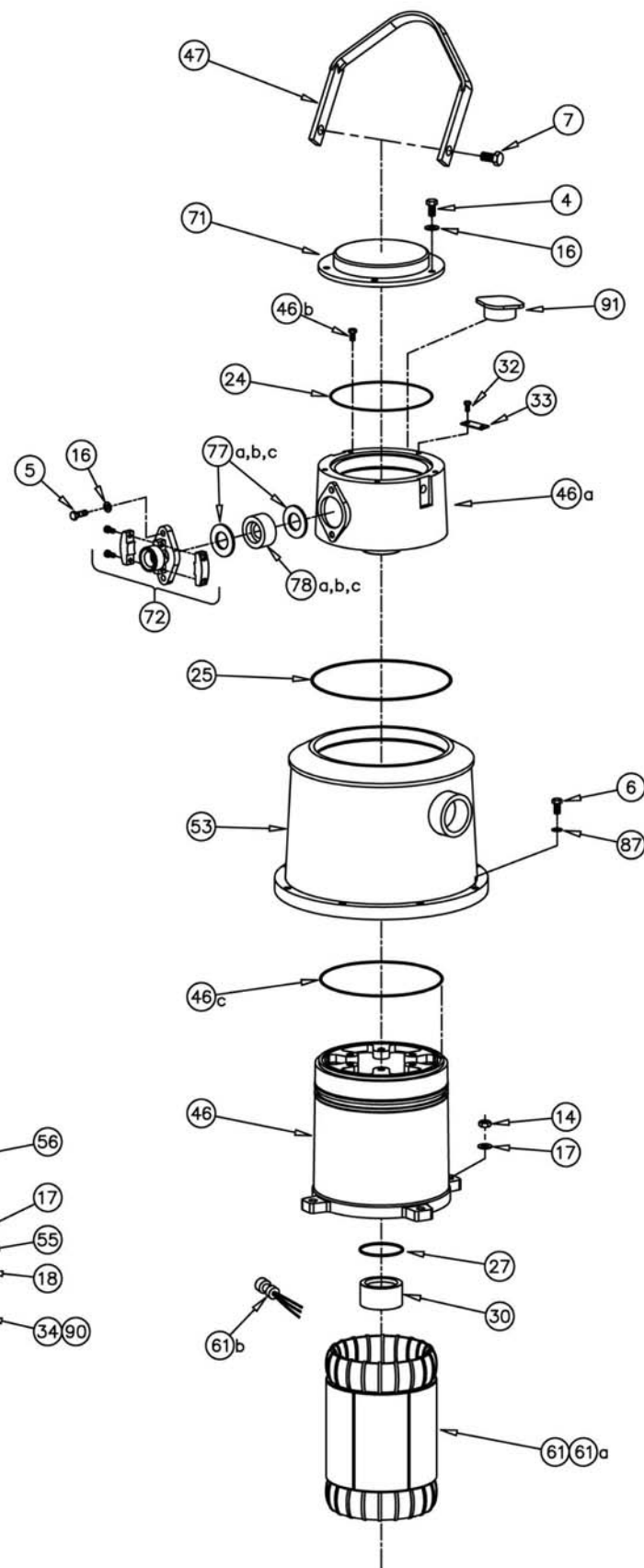
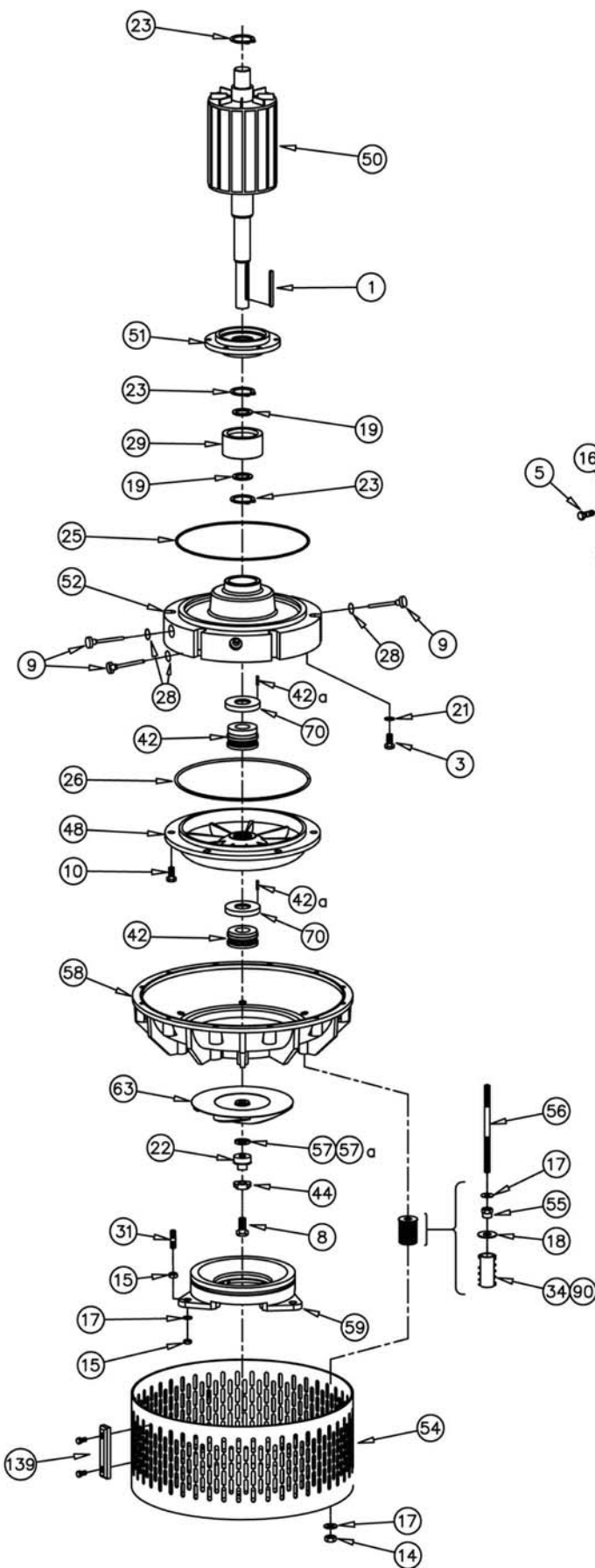
INFORMATION ON THIS DOCUMENT IS SUBJECT TO CHANGE WITHOUT NOTICE



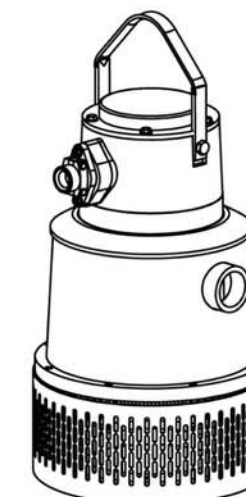
Unit 2/26 Ilda Rd.
Canning Vale. W.A. 6155
PO Box 1340
Canning Vale. W.A. 6970

Ph: 61 8 9256 3182
Fax: 61 8 9256 3867
Email: sales@pumpeng.com.au
Web: www.pumpeng.com.au

WITHOUT LIMITING THE RIGHTS UNDER COPYRIGHT, NO PART OF THIS DOCUMENT MAY BE REPRODUCED, STORED IN OR INTRODUCED TO A RETRIEVAL SYSTEM, OR TRANSMITTED IN ANY FORM OR BY ANY MEANS, OR FOR ANY PURPOSE, WITHOUT THE EXPRESS WRITTEN PERMISSION OF PUMPENG.



ACCESSORIES		
PART No.	DESCRIPTION	CONSISTS OF:
05-RK	5kW Repair Kit	Item #23 - Circlip
		Item #29 - Bearing Lower
		Item #30 - Bearing Upper
		Item #42 - Mech. Seal
		- Upper & Lower
		Item #70 - Wear Protection
		+
		1x O-Ring Kit #05 OK



ACCESSORIES		
PART No.	DESCRIPTION	CONSISTS OF:
05-OK	5kW O-Ring Kit	-
		Item #21 - Nylon Washer
		Item #24 - O-Ring
		Item #25 - O-Ring
		Item #26 - O-Ring
		Item #27 - O-Ring
		Item #28 - O-Ring
		Item #46C - O-Ring

ENHANCED PERFORMANCE PARTS

ITEM No.	PART No.	DESCRIPTION	MATERIAL	QTY.	ITEM No.	PART No.	DESCRIPTION	MATERIAL	QTY.
1	05130001	5kW Impeller Key	S/Steel	1	50	05100050	Rotor Assembly - Complete	SS/Alum.	1
3	05120003	Bearing Cover Bolt	S/Steel	3	50A	05100050A	Replaceable Rotor Shaft	S/Steel	1
4	05120004	Junction Cover Bolt	S/Steel	5	51	05190051	5kW Bearing Cover	Aluminium	1
5	05120005	Cable Entry Bolt	S/Steel	2	52	05190052	Bearing Housing Lower	Aluminium	1
6	05120006	Outer Casing Bolt	S/Steel	8	53	05630053	5kW Outer Casing	S/Steel	1
7	05120007	Screw-Handle	S/Steel	2	54	05100054	5kW Strainer - Galvanised	Galv. Steel	1
8	05120008	Impeller Bolt	S/Steel	1	55	05120055	Spacer Nut	S/Steel	4
9	05130009	Oil Housing Inspection Screw	S/Steel	3	56	05120056	Diffuser Stud	S/Steel	4
10	05120010	Oil Housing Screw	S/Steel	4	57	05120057	5kW Impeller Shim 0.3mm	S/Steel	3
14	05120014	M10 Nut	S/Steel	8	57A	05120057A	5kW Impeller Shim 1.5mm	S/Steel	2
15	05120015	Suction Cover Half Nut	S/Steel	6	58	05291058	Diffuser	Alum/Poly	1
16	05120016	M8 Washer	S/Steel	7	59	05291059	Suction Cover - High Head	Alum/Poly	1
17	05120017	M10 Washer	S/Steel	20	61	05200061	5kW Stator 415v	-	1
18	05120018	M20 Washer	S/Steel	4	61A	05200061A	5kW Stator 1000v	-	1
19	05120019	Bearing Spacer	S/Steel	2	61B	05200061B	Protective Motor Cable Sheath	Composite	1
21	05120021	Nylon Washer	S/Steel	1	63	05710063	Impeller - High Head	Cr27	1
22	05120022	Combination Lock Washer	Nylon	3	70	05105070	Wear Protection	NBR/SS	2
23	05120023	Circlip	HTS	3	71	05190071	Junction Box Cover/Lid	Aluminium	1
24	05100024	O-Ring - Junction Box Lid	NBR	1	72	05190072	5kW Cable Entry 16-22mm	Aluminium	1
25	05100025	O-Ring - Bearing Housing/Stator Casing	NBR	2	77	08120027	Seal Sleeve Washer 14-16mm	S/Steel	2
26	05100026	O-Ring - Oil Housing	NBR	1	77A	08120027A	Seal Sleeve Washer 16-18mm	S/Steel	2
27	05100027	O-Ring - Upper Bearing	NBR	1	77B	08120027B	Seal Sleeve Washer 18-20mm	S/Steel	2
28	05100028	O-Ring - Inspection Screw	NBR	3	77C	08120027C	Seal Sleeve Washer 20-22mm	S/Steel	2
29	05100029	Bearing Lower	-	1	78	08102031	Seal Sleeve 14-16mm	Rubber	1
30	08100122	Bearing Upper	-	1	78A	08102031A	Seal Sleeve 16-18mm	Rubber	1
31	05120031	Suction Cover Stud	S/Steel	3	78B	08102031B	Seal Sleeve 18-20mm	Rubber	1
32	05120032	Earth Plate Screw	S/Steel	2	78C	08102031C	Seal Sleeve 20-22mm	Rubber	2
33	05100033	5kW Earth Plate	S/Steel	1	87	05120087	Spring Washer	S/Steel	8
34	05100034	Spacer Pipe Spring	Galv. Steel	4	90	05120090	Spacer Tube	S/Steel	4
42	05128042	Mechanical Seal - Upper & Lower	TC	2	91	08102063	Lead Through Complete	Rubber	1
42A	05128042A	Mechanical Seal Drive Pin	S/Steel	2	-	-	-	-	-
44	05120044	Impeller Nut	S/Steel	1	-	-	-	-	-
46	05190046	5kW Stator Casing	Aluminium	1	-	-	-	-	-
46A	05190046A	Junction Box	Aluminium	1	-	-	-	-	-
46B	05190046B	M10 Bolt - Junction Box/Stator Casing	S/Steel	5	-	-	-	-	-
46C	05190046C	O-Ring - Junction Box/Stator Casing	NBR	1	-	-	-	-	-
47	05190047	5kW Pump Carry Handle - Galvanised	Galv. Steel	1	139	GP2400139	Anode	Zinc	3
48	05191048	Oil Housing	Alum/Poly	1	-	-	-	-	-

SUPPLIED BY:

INFORMATION ON THIS DOCUMENT IS SUBJECT TO CHANGE WITHOUT NOTICE

Title **PUMPENG 5kW 'Raptor'**
HIGH HEAD SUBMERSIBLE
DEWATERING PUMP

Rev. 1 Feb. '12



Unit 2/26 Ilda Rd.
Canning Vale. W.A. 6155
PO Box 1340
Canning Vale. W.A. 6970

Ph: 61 8 9256 3182
Fax: 61 8 9256 3867
Email: sales@pumpeng.com.au
Web: www.pumpeng.com.au

WITHOUT LIMITING THE RIGHTS UNDER
COPYRIGHT, NO PART OF THIS DOCUMENT
MAY BE REPRODUCED, STORED IN OR
INTRODUCED TO A RETRIEVAL SYSTEM,
OR TRANSMITTED IN ANY FORM OR BY
ANY MEANS, OR FOR ANY PURPOSE,
WITHOUT THE EXPRESS WRITTEN
PERMISSION OF PUMPENG.