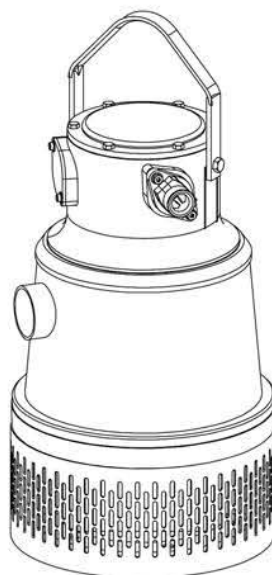


ACCESSORIES		
PART No.	DESCRIPTION	CONSISTS OF:
20RK	20kW Repair Kit	Item #30 – Bearing Circlip
		Item #38 – Bearing Upper
		Item #39 – Bearing Lower
		Item #67 – Upper Seal
		Item #75 – Wear Protection
		Item #76 – Circlip
		Item #77 – Lower Seal
		+
		1x O-Ring Kit #20 OK



ACCESSORIES		
PART No.	DESCRIPTION	CONSISTS OF:
20 OK	20kW O-Ring Kit	:-
		Item #31 – O-Ring
		Item #32 – O-Ring
		Item #33 – O-Ring
		Item #35 – O-Ring
		Item #36 – O-Ring
		Item #110 – O-Ring
		Item #95 – Terminal Board Gasket
		-

ENHANCED PERFORMANCE PARTS

ITEM No.	PART No.	DESCRIPTION	MATERIAL	QTY.	ITEM No.	PART No.	DESCRIPTION	MATERIAL	QTY.
1	20100001	Location Pin	HTS	3	57a	20120057A	Replaceable Rotor Shaft Only	S/Steel	1
2	20120002	Impeller Key	S/Steel	1	58	20100058	20kW Strainer	Galv/St	1
4	20120004	Stud Diffuser	S/Steel	12	59	20190059	Junction Box Cover	Aluminium	1
5	20120005	Stud Cable Entry	S/Steel	4	60	20100060	Bearing Seat	CI	1
6	20120006	Stud Stator Casing/Lid	S/Steel	6	61	20100061	Bearing Cover	Aluminium	1
8	20120008	Stud Bearing Housing Cover	S/Steel	6	62	20100062	Cover	Fibre	1
9	20120009	Stud Suction Cover	S/Steel	3	64	20200064	20kW 415v Stator	-	1
10	20120010	Screw	S/Steel	8	64a	20200064a	20kW 1000v Stator	-	1
13	20120013	Junction Box Screw	S/Steel	6	66	20120066	Stud Wet End	S/Steel	6
14	20120014	Impeller Screw	S/Steel	1	67	20128067	Upper Seal	TC	1
16	20120016	Handle Screw	S/Steel	2	75	20101075	Wear Protection	SS/Poly	1
17	20120017	Oil Housing Screw	S/Steel	3	76	20120076	Circlip	S/Steel	1
20	20120020	Nut	S/Steel	12	77	20128077	Lower Seal	TC	1
21	20120021	Nut	S/Steel	27	85	20120085	Earth Plate	S/Steel	1
22	20120022	Lock Nut	S/Steel	3	86	20190086	Cable Entry Cover Plate	Aluminium	1
24	20120024	Washer	S/Steel	8	87	20100087	Cable Entry Cover Gasket	Rubber	1
25	20120025	Washer	S/Steel	12	89	20120089	Spacer Pipe	Galv/St	6
26	20120026	Washer	S/Steel	34	90	20100090	Spacer Pipe Sleeve	NBR	6
28	20120028	Bearing Washer	S/Steel	2	91	20100091	Spacer Pipe Spring	Galv/St	6
30	20100030	Bearing Circlip	HTS	1	92	20120092	Spacer Nut	S/Steel	6
31	20100031	O-Ring	NBR	3	93	20120093	Washer-Spring	S/Steel	6
32	20100032	O-Ring	NBR	1	94	20100094	Terminal Board	Composite	1
33	20100033	O-Ring	NBR	2	95	20100095	Terminal Board Gasket	Fibre	1
35	20100035	O-Ring	NBR	3	97	20100097	Handle	Galv/St	1
36	20100036	O-Ring	NBR	1	99	20120010	Screw	S/Steel	4
38	20100038	Bearing Upper	-	1	100	20190100	Cable Entry 14mm to 30mm	Aluminium	1
39	20100039	Bearing Lower	-	1	105a	20120105A	Seal Sleeve Washer 16-18mm	S/Steel	2
43	20120043	Screw Inspection	S/Steel	3	105b	20120105B	Seal Sleeve Washer 18-20mm	S/Steel	2
47	20630047	20kW Outer Casing	S/Steel	1	105d	20120105D	Seal Sleeve Washer 22-24mm	S/Steel	2
48	20190048	20kW Stator Casing	Aluminium	1	105f	20120105F	Seal Sleeve Washer 26-28mm	S/Steel	2
49	20190049	Bearing Housing Upper/Lid	Aluminium	1	106a	20101106A	Seal Sleeve 16-18mm	Rubber	1
50	20190050	Bearing Housing Lower	Aluminium	1	106b	20101106B	Seal Sleeve 18-20mm	Rubber	1
51	20191051	Oil Housing	Alum/Poly	1	106d	20101106D	Seal Sleeve 22-24mm	Rubber	1
52	20191052	Diffuser	Alum/Poly	1	106f	20101106F	Seal Sleeve 26-28mm	Rubber	1
53	20191053	Suction Cover	Alum/Poly	1	110	20100110	O-Ring	NBR	1
54	20120054	Impeller Lock Nut	S/Steel	1	-	-	-	-	-
55	20120055	Impeller Shim 0.3mm	S/Steel	3	139	GP2400139	Anode	Zinc	4
55a	20120055A	Impeller Washer 1.5mm	S/Steel	5	-	-	-	-	-
56	20710056	Impeller	Cr27	1	-	-	-	-	-
57	20100057	20kW Rotor Assembly – Complete	S/Steel	1	-	-	-	-	-

Title **PUMPENG 20kW 'Raptor'
HIGH HEAD SUBMERSIBLE
DEWATERING PUMP**

Rev. A Oct '08

SUPPLIED BY:

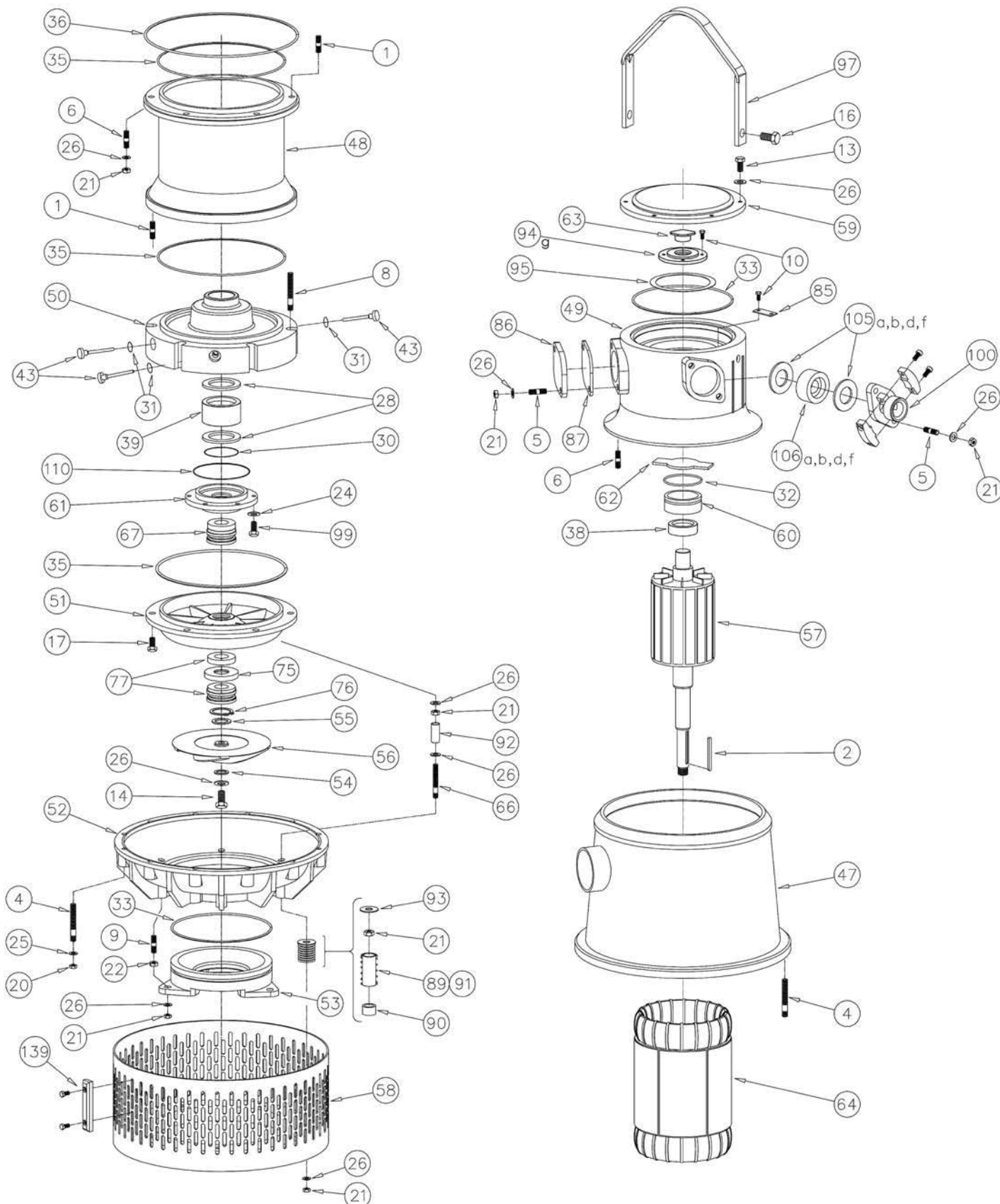
INFORMATION ON THIS DOCUMENT IS SUBJECT TO CHANGE WITHOUT NOTICE



Unit 2/26 Ilda Rd.
Canning Vale. W.A. 6155
PO Box 1340
Canning Vale. W.A. 6970

Ph: 61 8 9256 3182
Fax: 61 8 9256 3867
Email: sales@pumpeng.com.au
Web: www.pumpeng.com.au

WITHOUT LIMITING THE RIGHTS UNDER COPYRIGHT, NO PART OF THIS DOCUMENT MAY BE REPRODUCED, STORED IN OR INTRODUCED TO A RETRIEVAL SYSTEM, OR TRANSMITTED IN ANY FORM OR BY ANY MEANS, OR FOR ANY PURPOSE, WITHOUT THE EXPRESS WRITTEN PERMISSION OF PUMPENG.



DO NOT SCALE

Title **PUMPENG 20kW 'Raptor'
HIGH HEAD SUBMERSIBLE
DEWATERING PUMP**

SUPPLIED BY:

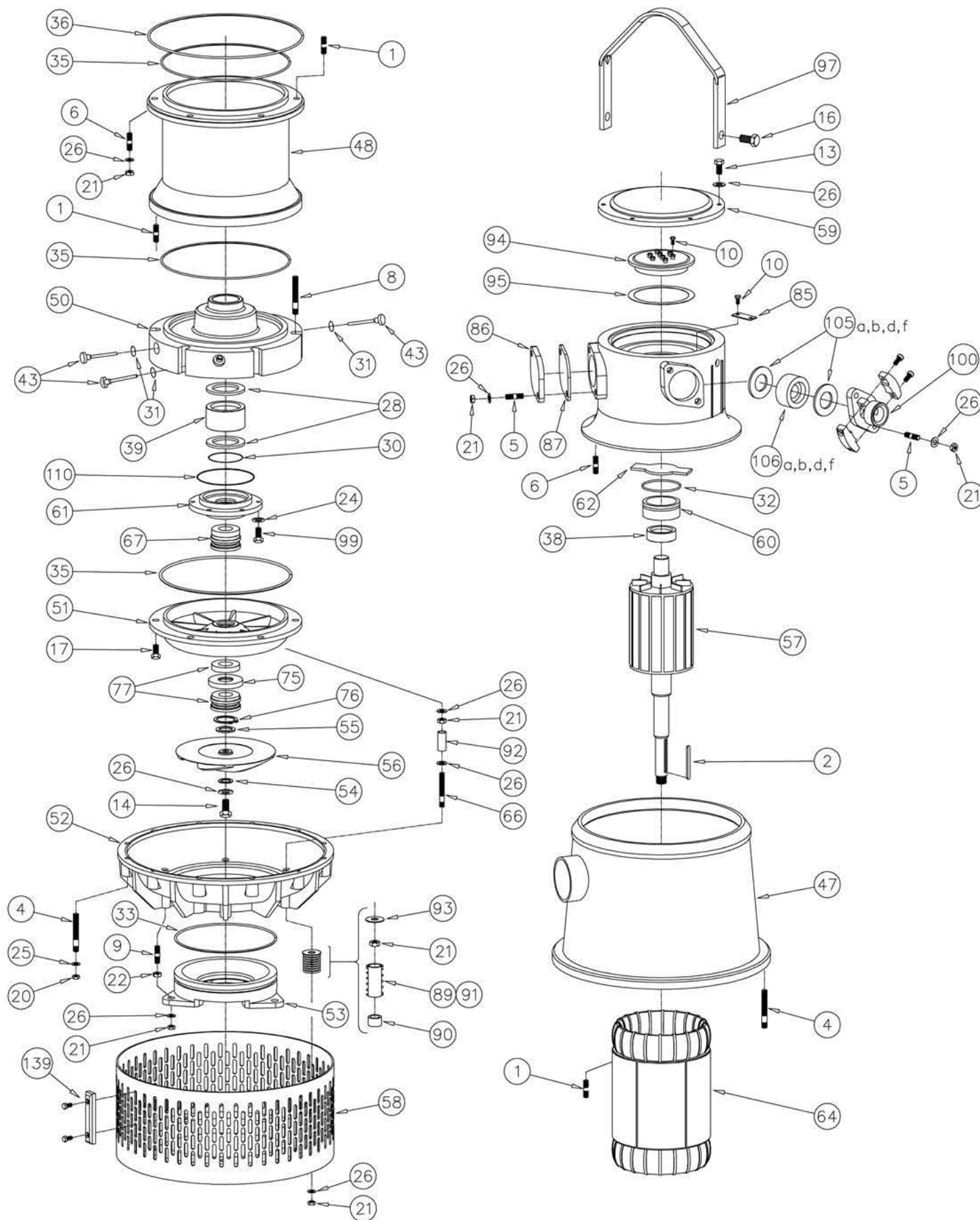
INFORMATION ON THIS DOCUMENT IS SUBJECT TO CHANGE WITHOUT NOTICE



Unit 2/26 Ilda Rd.
Canning Vale. W.A. 6155
PO Box 1340
Canning Vale. W.A. 6970

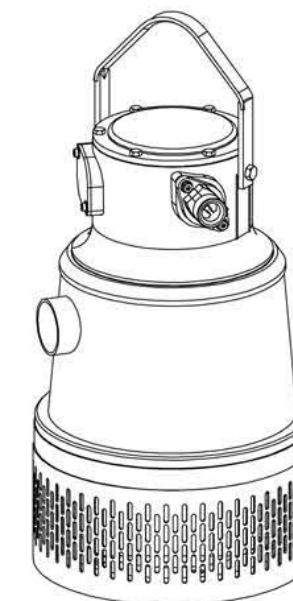
Ph: 61 8 9256 3182
Fax: 61 8 9256 3867
Email: sales@pumpeng.com.au
Web: www.pumpeng.com.au

WITHOUT LIMITING THE RIGHTS UNDER
COPYRIGHT, NO PART OF THIS DOCUMENT
MAY BE REPRODUCED, STORED IN OR
INTRODUCED TO A RETRIEVAL SYSTEM,
OR TRANSMITTED IN ANY FORM OR BY
ANY MEANS, OR FOR ANY PURPOSE,
WITHOUT THE EXPRESS WRITTEN
PERMISSION OF PUMPENG.



DO NOT SCALE

ACCESSORIES		
PART No.	DESCRIPTION	CONSISTS OF:
20RK	20kW Repair Kit	Item #30 – Bearing Circlip Item #38 – Bearing Upper Item #39 – Bearing Lower Item #67 – Upper Seal Item #75 – Wear Protection Item #76 – Circlip Item #77 – Lower Seal + 1x O-Ring Kit #20 OK



ACCESSORIES		
PART No.	DESCRIPTION	CONSISTS OF:
20 OK	20kW O-Ring Kit	:- Item #31 – O-Ring Item #32 – O-Ring Item #33 – O-Ring Item #35 – O-Ring Item #36 – O-Ring Item #110 – O-Ring Item #95 – Terminal Board Gasket -

ENHANCED PERFORMANCE PARTS

ITEM No.	PART No.	DESCRIPTION	MATERIAL	QTY.	ITEM No.	PART No.	DESCRIPTION	MATERIAL	QTY.
1	20100001	Location Pin	HTS	3	57a	20120057A	Replaceable Rotor Shaft Only	S/Steel	1
2	20120002	Impeller Key	S/Steel	1	58	20100058	20kW Strainer	Galv/St	1
4	20120004	Stud Diffuser	S/Steel	12	59	20190059	Junction Box Cover	Aluminium	1
5	20120005	Stud Cable Entry	S/Steel	4	60	20100060	Bearing Seat	CI	1
6	20120006	Stud Stator Casing/Lid	S/Steel	6	61	20100061	Bearing Cover	Aluminium	1
8	20120008	Stud Bearing Housing Cover	S/Steel	6	62	20100062	Cover	Fibre	1
9	20120009	Stud Suction Cover	S/Steel	3	64	20200064	20kW 415v Stator	-	1
10	20120010	Screw	S/Steel	8	64a	20200064a	20kW 1000v Stator	-	1
13	20120013	Junction Box Screw	S/Steel	6	66	20120066	Stud Wet End	S/Steel	6
14	20120014	Impeller Screw	S/Steel	1	67	20128067	Upper Seal	TC	1
16	20120016	Handle Screw	S/Steel	2	75	20101075	Wear Protection	SS/Poly	1
17	20120017	Oil Housing Screw	S/Steel	3	76	20120076	Circlip	S/Steel	1
20	20120020	Nut	S/Steel	12	77	20128077	Lower Seal	TC	1
21	20120021	Nut	S/Steel	27	85	20120085	Earth Plate	S/Steel	1
22	20120022	Lock Nut	S/Steel	3	86	20190086	Cable Entry Cover Plate	Aluminium	1
24	20120024	Washer	S/Steel	8	87	20100087	Cable Entry Cover Gasket	Rubber	1
25	20120025	Washer	S/Steel	12	89	20120089	Spacer Pipe	Galv/St	6
26	20120026	Washer	S/Steel	34	90	20100090	Spacer Pipe Sleeve	NBR	6
28	20120028	Bearing Washer	S/Steel	2	91	20100091	Spacer Pipe Spring	Galv/St	6
30	20100030	Bearing Circlip	HTS	1	92	20120092	Spacer Nut	S/Steel	6
31	20100031	O-Ring	NBR	3	93	20120093	Washer-Spring	S/Steel	6
32	20100032	O-Ring	NBR	1	94	20100094	Terminal Board	Composite	1
33	20100033	O-Ring	NBR	2	95	20100095	Terminal Board Gasket	Fibre	1
35	20100035	O-Ring	NBR	3	97	20100097	Handle	Galv/St	1
36	20100036	O-Ring	NBR	1	99	20120010	Screw	S/Steel	4
38	20100038	Bearing Upper	-	1	100	20190100	Cable Entry 14mm to 30mm	Aluminium	1
39	20100039	Bearing Lower	-	1	105a	20120105A	Seal Sleeve Washer 16-18mm	S/Steel	2
43	20120043	Screw Inspection	S/Steel	3	105b	20120105B	Seal Sleeve Washer 18-20mm	S/Steel	2
47	20630047	20kW Outer Casing	S/Steel	1	105d	20120105D	Seal Sleeve Washer 22-24mm	S/Steel	2
48	20190048	20kW Stator Casing	Aluminium	1	105f	20120105F	Seal Sleeve Washer 26-28mm	S/Steel	2
49	20190049	Bearing Housing Upper/Lid	Aluminium	1	106a	20101106A	Seal Sleeve 16-18mm	Rubber	1
50	20190050	Bearing Housing Lower	Aluminium	1	106b	20101106B	Seal Sleeve 18-20mm	Rubber	1
51	20191051	Oil Housing	Alum/Poly	1	106d	20101106D	Seal Sleeve 22-24mm	Rubber	1
52	20191052	Diffuser	Alum/Poly	1	106f	20101106F	Seal Sleeve 26-28mm	Rubber	1
53	20191053	Suction Cover	Alum/Poly	1	110	20100110	O-Ring	NBR	1
54	20120054	Impeller Lock Nut	S/Steel	1	-	-	-	-	-
55	20120055	Impeller Shim 0.3mm	S/Steel	3	139	GP2400139	Anode	Zinc	4
55a	20120055A	Impeller Washer 1.5mm	S/Steel	5	-	-	-	-	-
56	20710056	Impeller	Cr27	1	-	-	-	-	-
57	20100057	20kW Rotor Assembly – Complete	S/Steel	1	-	-	-	-	-

SUPPLIED BY:

INFORMATION ON THIS DOCUMENT IS SUBJECT TO CHANGE WITHOUT NOTICE

Title **PUMPENG 20kW 'Raptor' HIGH HEAD SUBMERSIBLE DEWATERING PUMP**

Rev. C Mar. '09



Unit 2/26 Ilda Rd.
Canning Vale. W.A. 6155
PO Box 1340
Canning Vale. W.A. 6970

Ph: 61 8 9256 3182
Fax: 61 8 9256 3867
Email: sales@pumpeng.com.au
Web: www.pumpeng.com.au